

SPS



[SPS]

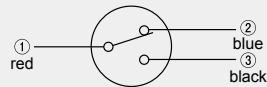
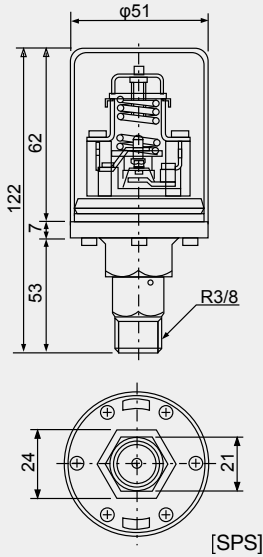
Specifications

Rating	250V,5A 125V,10A
Contact type	Switch OFF on pressure rise in red-blue circuit Switch ON on pressure rise in red-black circuit

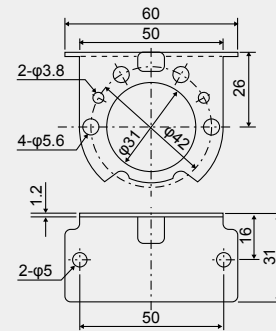
Model

Model	Part Number	Upper limit pressure (MPa)	Lower limit pressure (MPa)	Durable pressure (MPa)
SPS-8TP-1.7-1.4-3/8	209181	1.7	1.4	21
SPS-8T-0.1-0.05-1/4	109181	0.1	0.05	1
SPS-8T-0.25-0.2-1/4	109182	0.25	0.2	2
SPS-8T-0.4-0.35-1/4	109183	0.4	0.35	
SPS-8T-1.2-0.9-1/4	109184	1.2	0.9	

Dimensional drawing



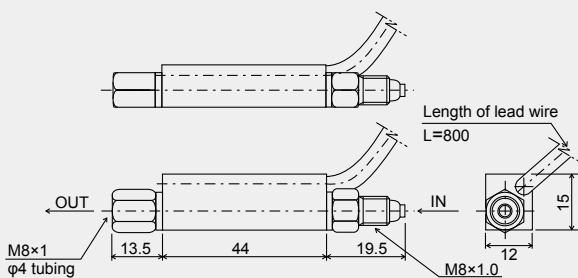
L-shape mounting bracket
Model: SPS-T



Pressure sensor



Dimensional drawing



Specifications

Maximum contact capacity	50W (Pure resistance)
Maximum working voltage / Maximum working current	DC200V/1.0A, AC200V/0.6A
Maximum conduction current	DC, AC, 2.0A
Maximum initial resistance	0.1Ω
Insulation resistance	10 ⁹ Ω

Model

Model	Contact type	Remarks
OFS-A	NO	Lead wire drawing direction IN side
OFS-B	NC	Lead wire drawing direction OUT side

Directions for use

- See the instruction manual.